

**ProVetSurg – your local visiting advanced surgical service**

For a full procedure list please visit  
[www.provetsurg.co.uk](http://www.provetsurg.co.uk)

- Cruciate repair
- Patella stabilisation
- Fracture repair and trauma surgery
- Arthroscopy
- BOAS surgery
- TECA BO
- Complex mass resection

## Our team is growing!



We are delighted to welcome Emma Wells to the ProVetSurg team. Emma is an RCVS

Recognised Advanced Practitioner with a wealth of experience and knowledge and has been working as a peripatetic surgeon since 2016.

Emma Graduated from Bristol University in 2004. After spending 3 years in mixed practice in Cornwall, she undertook an internship at Davies Veterinary Specialists, and completed her RCVS Certificate in Small Animal Surgery in 2010. She went on to maintain a high surgical case load during time spent working in hospitals in Bath and Gloucester, and began working as a peripatetic surgeon in 2016. Along side this, she has spent time locumming as an orthopaedic surgeon at Vale Referrals. Emma became an RCVS Advanced Veterinary Practitioner in Small Animal Surgery in March 2018.

*"As a peripatetic surgeon, I have experienced the symbiotic relationship enjoyed by practices and surgeon alike, and value being part of a service that has become accessible to all. I enjoy every aspect of both orthopaedic and soft tissue surgery"*

## Arthroscopy service

Did you know that we offer arthroscopy as part of our peripatetic service? Duncan and Nicci are very experienced arthroscopists and frequently perform arthroscopic examination of elbows and shoulders for a wide variety of indications including diagnosis and management of elbow dysplasia and treatment of shoulder lesions such as OCD and biceps tendon pathology.



## Introduction to Orthopaedics CPD



Nicci has been delivering a series of webinars for Veterinary Instrumentation, the first of the webinars have been delivered and recordings are available, but there are more webinars in the series! Look out for the links on Veterinary Instrumentation social media.

- [Introduction to Femoral Head and Neck Excision](#)
- [Introduction to Plating with DCPs](#)
- [Introduction to Patellar Luxation Surgery](#)
- [Introduction to Fracture Repair](#)
- [Introduction to Locking Plate Technology](#)

## Reggie's case of coronoid disease

Reggie is an 18 month old Staffordshire Bull Terrier who was diagnosed with a fragmented right medial coronoid process via radiography and then CT imaging. Following arthroscopic fragment removal and cartilage debridement, he made a good recovery and has been able to return to his usual exercise routine without any further treatment.



The fragments removed during arthroscopy



CT scan showing fragmented coronoid process



Reggie at his first post-operative check up

# Radiographic Assessment of Elbows

Imaging forms an important part of assessing patients with elbow mediated lameness, and the first place we usually start is with radiography.

Assessing elbow radiographs can be tricky. ....here is our handy guide on where to start

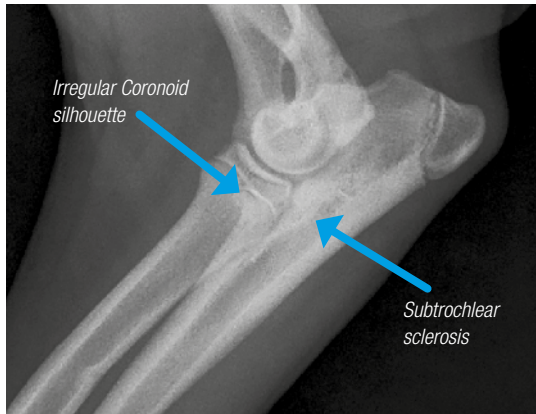
- Always take 3 radiographic views; a neutral mediolateral, a flexed mediolateral, and a straight craniocaudal view
- Always radiograph the affected and the "normal" limb for comparison
- If in doubt - send your radiographs in to us for review and a free of charge report!



Flexed mediolateral juvenile elbow view allowing assessment of anconeal process

### Analgesia

Perioperative patient comfort is our top priority. We assess each patient individually and tailor a plan to the surgery required, taking into account concurrent disease or medication. Spinal nerve blocks form an important part of our analgesia plans, and we always perform nerve blocks prior to each surgery. Most commonly, we perform sciatic and femoral spinal nerve blocks prior to stifle surgery using bupivacaine. The use of nerve blocks allows us to take a truly multi modal approach to analgesia and means we can use less inhaled anaesthetic agent resulting in reduced side effects such as hypotension in our anaesthetised patients. Nerve blocks also contribute hugely to the comfort of our patients in the immediate post operative phase, lasting for at least 8 hours and in many cases even longer than this.



Mediolateral radiograph of juvenile elbow illustrating subtrochlear sclerosis and irregular coronoid silhouette



Craniocaudal juvenile elbow radiograph

## Meet the team



### Dr Nicci Meadows – Surgeon

BVetMed CertAVP GSAS MRCVS  
RCVS Recognised Advanced Practitioner in Small Animal Surgery  
Nicci is an experienced surgeon and has been providing a peripatetic surgical service since 2015 and is as happy performing elective cruciate surgery as she is repairing complex fractures.



### Dr Heidi Burkinshaw – Surgeon

BSc(Hons) BVetMed PgC(SAS) MRCVS  
Heidi is an excellent orthopaedic surgeon, but is also a very experienced soft tissue surgeon and is keen on ear surgery and complex mass resection.



### Dr Duncan Greeff – Surgeon

BVetMed CertAVP GSAS PGCert (VPS) CertAVP VDI MRCVS  
RCVS Recognised Advanced Practitioner in Small Animal Surgery and Veterinary Diagnostic Imaging  
Duncan has a vast level of experience in both orthopaedic and soft tissue surgery, and has additional skills in diagnostic musculoskeletal ultrasound which is very useful in cases of tendon disease. Duncan regularly performs elbow and shoulder arthroscopy.



### Emma Wells – Surgeon

BVSc CertSAS MRCVS  
RCVS Recognised Advanced Practitioner in Small Animal Surgery  
Emma graduated from Bristol University in 2004 and has been focussing on surgery ever since, most recently working as a peripatetic surgeon. Emma is confident performing a wide range of both soft tissue and orthopaedic surgeries.



### Dr Chris Nikolaou – Surgeon

DVM CertAVP GSAS MRCVS  
RCVS Recognised Advanced Practitioner in Small Animal Surgery  
Chris joined the team in October as another very experienced RCVS Recognised Advanced Practitioner. Chris has authored multiple papers that have been published in peer reviewed literature. His research interest is finding mathematical applications in orthopaedics while his clinical interests are traumatology and stifle surgery.



### Bev Morgan – Surgical Nurse

RVN  
Bev graduated from the Royal Veterinary College in 2010. She is a vital part of the clinical team, providing anaesthetic and scrubbed assistant support to the surgeons. Bev is also involved in organising case bookings on a day to day basis.



### Hannah Stacey – Physiotherapy adviser

PG Dip Veterinary Physiotherapy, BSc (Hons)  
Physiotherapy, MCSP, ACPAT Cat A Member  
Hannah is on hand to help us with cases that are particularly tricky to rehabilitate or those patients that need extra support post operative. She works together with our surgeons to ensure that pets receive a holistic approach to their recovery.

We are now on Instagram and LinkedIn - check out our pages for updates on our most recent cases and news.



[www.instagram.com/provetsurg/](https://www.instagram.com/provetsurg/)



[www.linkedin.com/company/provetsurg-limited](https://www.linkedin.com/company/provetsurg-limited)